



Milan Novák found what he was looking for, Dognecea Mts., South Banat



Albite pegmatite with tourmaline and apatite clots, beryl (arrow) and microscopic columbite, Terego



Pegmatite vein in enclave-bearing tourmaline granite, Cer Mts., Serbia



Šar Mountains along the Kosovo – North Macedonia border



Beryl- and columbite-bearing pegmatite vein in tourmaline granite, Cer Mt., Serbia



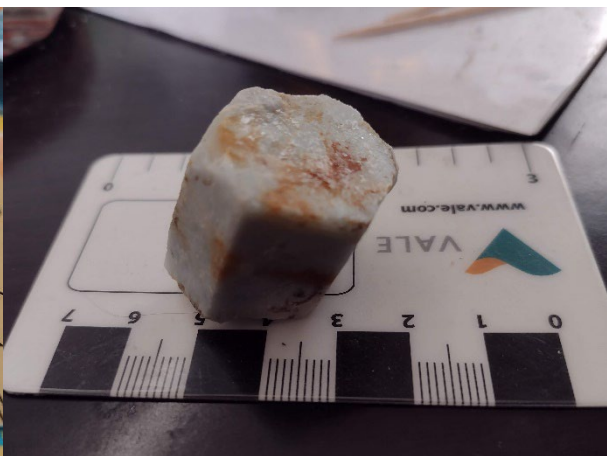
Beryl- and columbite-bearing pegmatite in tourmaline granite, Cer Mt., Serbia



Columbite in pegmatite, Cer Mt., Serbia



Beryl in pegmatite, Cer Mt., Serbia



Beryl crystal, Cer Mt., Serbia



Jadarite nodules in shale, drill core, Jadar Basin, Serbia



Beryl in pegmatitic smokey quartz, Brusnik, Bosnia Serbia