



Bad weather, bad timing, Lotru Mts.



Structural measurements in the Cataracte Dome together with the BRGM colleagues



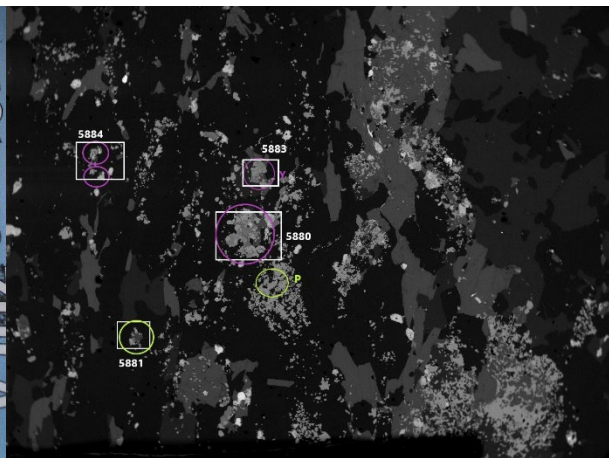
Garnet pegmatite, Crişma-Voislova, M. Mic



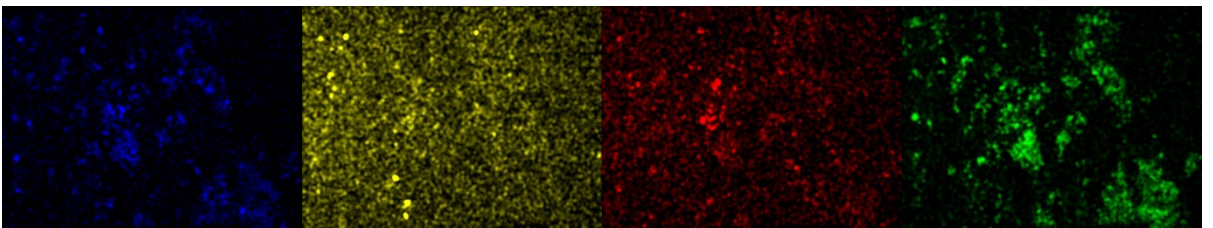
Old trench in the quartz core and the blocky zone of a beryl pegmatite, Mănăileasa Mts.



Beryl in microcline gneiss, Grădiştea de Munte



Back-scattered electron image of a rare-metal – bearing gneiss



X-Ray compositional maps for Nb, Th, Y and Zr of the field in the previous image