



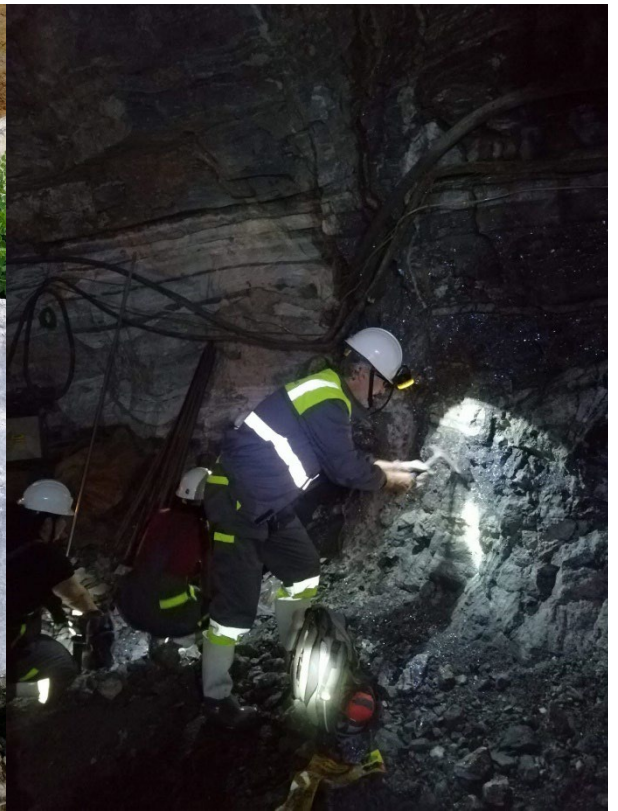
Biotite-bearing feldspar pegmatite, Rakitovo, Rila Massif



Pegmatite intruded in marble in abandoned quarry, Lepenitsa, Rila Massif



Pegmatite intruded in marble, Lepenitsa, Rila Massif



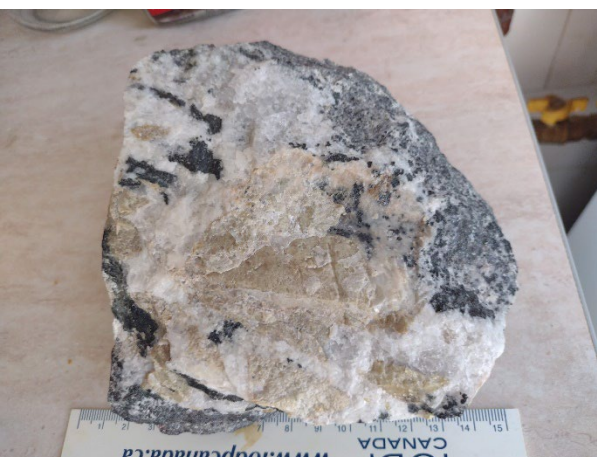
Pegmatite cross-cutting sulfide-bearing marble in the Dzhurkovo Mine, Lyki, East Rhodope



Beryl in rare metal pegmatites at Strelcha, Srednegorie Massif



Beryl crystal from the blocky zone of the Strelcha pegmatite



Titanite megacrysts from mafic pegmatoid, Arda River, eastern Rhodopes



Looking forward to leaving for the fieldtrip, Velingrad eastern Rhodopes