



Prof. Cempírek in dialogue with minerals and structures in a pegmatite quarry, Gilău Mts.



Pegmatite vein in sheared host-rock, Valea Ierii, Gilău Mts.



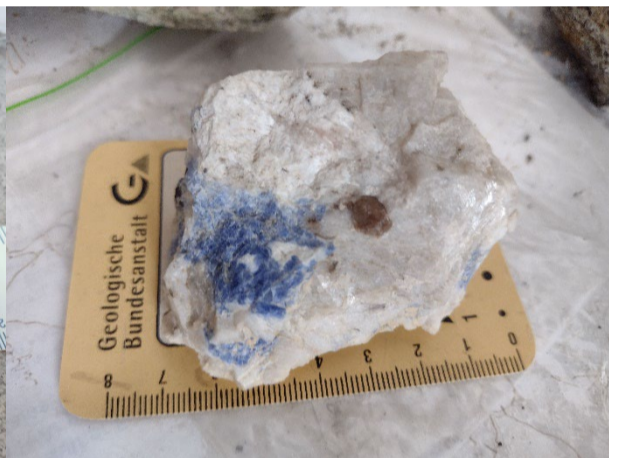
Sheared garnet and tourmaline pegmatite, Scărișoara brook, Rodna Mts.



Tourmaline and apatite in pegmatite, former Ciungi mine, Preluca



Pyroxmangite pegmatoid, Răzoare, Preluca



Syenite pegmatite with sodalite and zircon, Valea Mare, Ditrău



Pegmatitic nepheline, Güdüc, Ditrău alkaline massif



Ti-Nb and REE ore vein, Jolotca



Panoramic view of the Jolotca orefield



Ti-Nb ore with pyrite, Jolotca



Dr. Jakab Gyula signing autographs on his new book, Ditrău