



International partners at an outcrop of the Lotru Cataracts pegmatite, left to right: dr. Jaromír Tvrđý, eng. Pavel Jedlička†, prof. Jan Cempírek, G. Săbău, prof. Rossitsa Vassileva, prof. Silvina Georgieva, prof. Milan Novák



Scattered along the mountaintop, Lotru Mts. In the picture, prof. Vassileva, Bulgaria



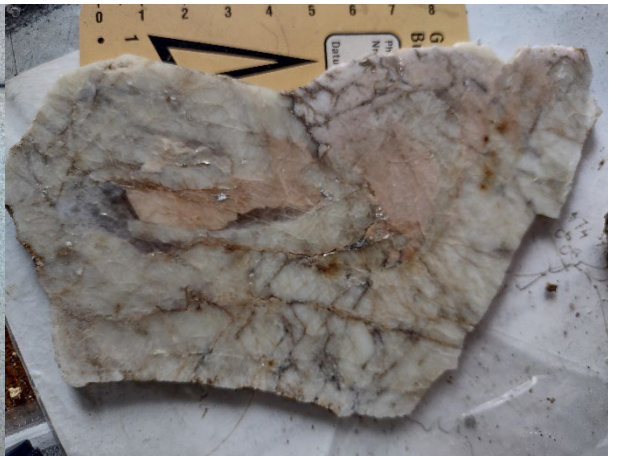
Mineral commodities from the Lotru pegmatitic field: spodumene, beryl, feldspar



Beryl from the Conțu pegmatite



Kyanite and staurolite in oligoclase pegmatoid, Cristești, Lotru Mts.



Oriented intergrowth of beryl, K-feldspar and quartz with zircon grains, Mănăileasa Mts.



Garnet megacryst in quartz, Vidruța



Skeletal garnet intergrown with albite, Vidruța